



Registering for Kindergarten in Rocky Mountain School District

Registration for the 2025-2026 school year begins on January 20 and continues through to January 31, 2025.



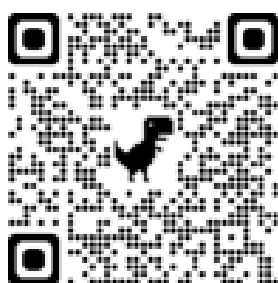
Who Can Register: Children that will be 5 years of age on or before December 31, 2025 are eligible to register for Kindergarten.

How to Register: Please go to the Rocky Mountain School District website (www.sd6.bc.ca) and click on the registration tile.

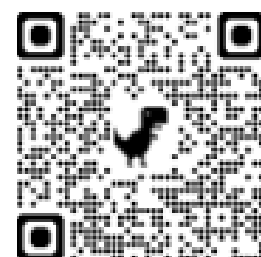


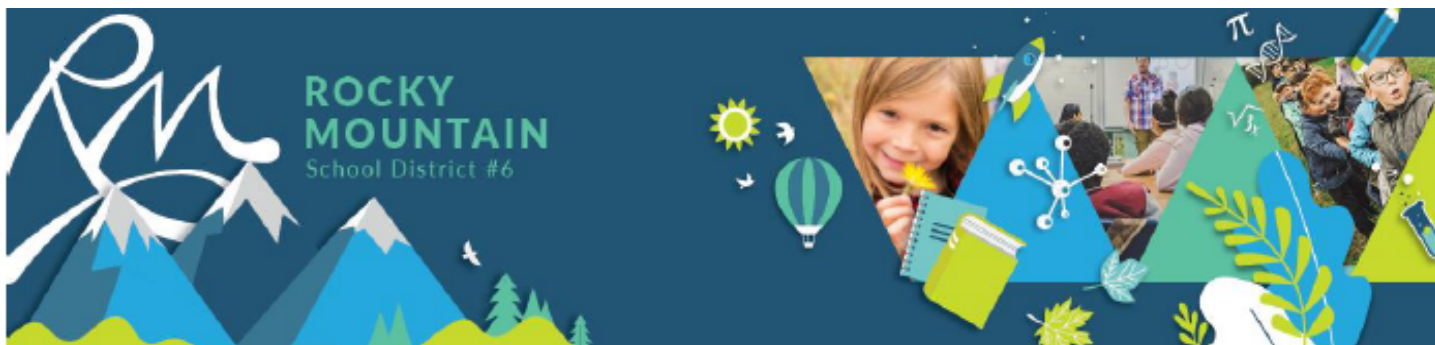
Additional information regarding Kindergarten and Early Learning can be found on the [Early Learning and Child Care page](#) on the kindergarten tile.

Registration Tile QR



Kindergarten Tile QR





Kindergarten Gradual Entry Frequently Asked Questions

What is gradual entry?

In 2010, kindergarten shifted from a half-day program to a full-day program in the province of British Columbia. Since that time, the Ministry of Education and Child Care has strategically allowed for fewer minutes of instruction in kindergarten to support a gradual entry during the first two weeks of school.

Why is gradual entry valuable?

The most significant transition a child will make in their education journey is from early years into kindergarten. The kindergarten experience sets the stage for the next 13 years of a child's path from the primary grades, to upper elementary, right through to high school graduation.

While gradual entry may look somewhat different at schools across the district, the first two weeks of kindergarten are all designed to provide time and space for classroom teachers to attend more closely to each child's entry into their new environment. Families also have time and space to build relationships with teachers during gradual entry which is equally critical because the more comfortable families are with the kindergarten transition, the more relaxed children will be about coming to kindergarten.

Gradual entry involves introducing children to the physical space of the school including classrooms, bathrooms, gymnasium, library, playground, and other areas, all of which are critical in developing a sense of place for children. Shorter days allow children to learn important structures, routines, and expectations so they can develop a level of comfort, confidence, and independence in their new surroundings without becoming overwhelmed and/or overstimulated which can result in adverse experiences and associations with school.

The goal for all gradual entry plans is to have children happy, comfortable, and excited to come to school which naturally translates into families feeling confident in sending their children to school.

When will I know my school's gradual entry plan?

Schools will share gradual entry plans with their registered kindergarten families no later than the first week of July to allow families time to plan for September. Additionally, all gradual entry plans will be posted on the [Kindergarten](#) tile of the school district website.

Kindergarten Tile QR





ENROLLING IN KINDERGARTEN!

A Conversation Starter for Parents

The School Act states that families can enroll their child in an educational program, provided by a Board of Education the year their child will have reached the age of 5 years by December 31. While most children start school the year they turn 5, parents of children in British Columbia may defer the enrolment of their child until the first school day of the year they turn 6 by December 31.

If a family is considering deferring Kindergarten enrollment, it is advised that they speak to their catchment area school directly in order to make the best decision for their child. Once a student starts Kindergarten, this decision cannot be changed.



Below is some information to consider when thinking about enrolling your child in Kindergarten.

Potential Benefits of a Deferred Start	Potential Outcomes of a Deferred Start
Deferring school can provide some additional time for a child to mature.	Deferring entry to school also delays early intervention and supports that can be provided by the school team.
If school is deferred, this can provide children and families time to work on social skills that the child may not have learned yet.	Different skills develop at different rates. Children who are still learning social skills may have strong academic skills and these may be affected by a deferred start.
A combination of a child being young when entering kindergarten, along with concerns of a child's learning ability, may cause parents to wonder about the best time for their child to start kindergarten.	Research indicates that deferring kindergarten entry has no long-term effect on academic achievement. By Grade 3, early differences tend to disappear. Your child's school can provide you with more information.



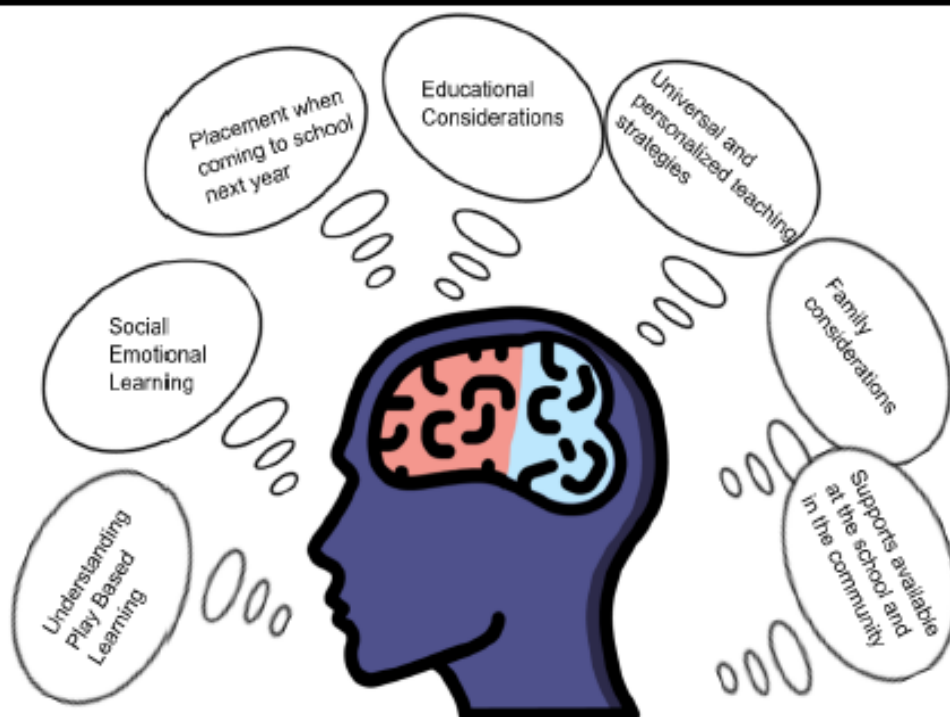
Kindergarten programs are supportive of all children, whether they are still four years old or approaching age six when they start. The learning outcomes in

Kindergarten recognize and celebrate that students reach their developmental milestones at different ages. In Kindergarten, all children are provided with many opportunities to learn and develop new social and academic skills with their peers in a caring, inclusive classroom setting.



Deferring Kindergarten does not guarantee improvement for your child. This is a decision that requires careful consideration and should be made in consultation with your child's school.

When making a decision to defer Kindergarten for your child, it is important to consult with the administration at the school where your child will attend. They will hear your concerns, answer questions, present options and explain the pros and cons. There are many pieces to consider and discuss, including but not limited to:



Possible topics of Conversation with School Admin.